

# Energyst DSR - impact of recent policy changes

Tom Palmer - Principal Consultant



# History of change

- Charging approach has continued to adapt
- DNOs developed common approaches to connections charging and distribution use-of-system (DUoS) charging

**2000**

Structure of Charges

**2010**

LV and HV Common Distribution  
Charging Methodology

**2012**

EHV Distribution Charging  
Methodology

- Transmission charging determined using methodology administered by National Grid

**2010**

Transmission Access Review

**2010**

Project Transmit

# Outcomes

- Historic drivers of changes driven by

## **Transmission**

Driven by the needs to increase renewable generation on the system and manage additional capacity connecting

### **Outcome**

Connect and Manage  
Reflect costs of different types of generators

## **Distribution**

Lack of clarity around charging methodology. Lack of clarity for suppliers

### **Outcome**

New consistent framework for setting use of system charges

# Drivers of change

## Targeted Charging Review

**Embedded Benefits**  
Transmission versus  
Distribution

**Behind the Meter**  
Charge Avoidance

**Network Cost Recovery**  
Recovering network costs

## Forward Looking Charges and Network Access

**Embedded Benefits**  
Transmission versus  
Distribution

**Behind the Meter**  
Charge avoidance

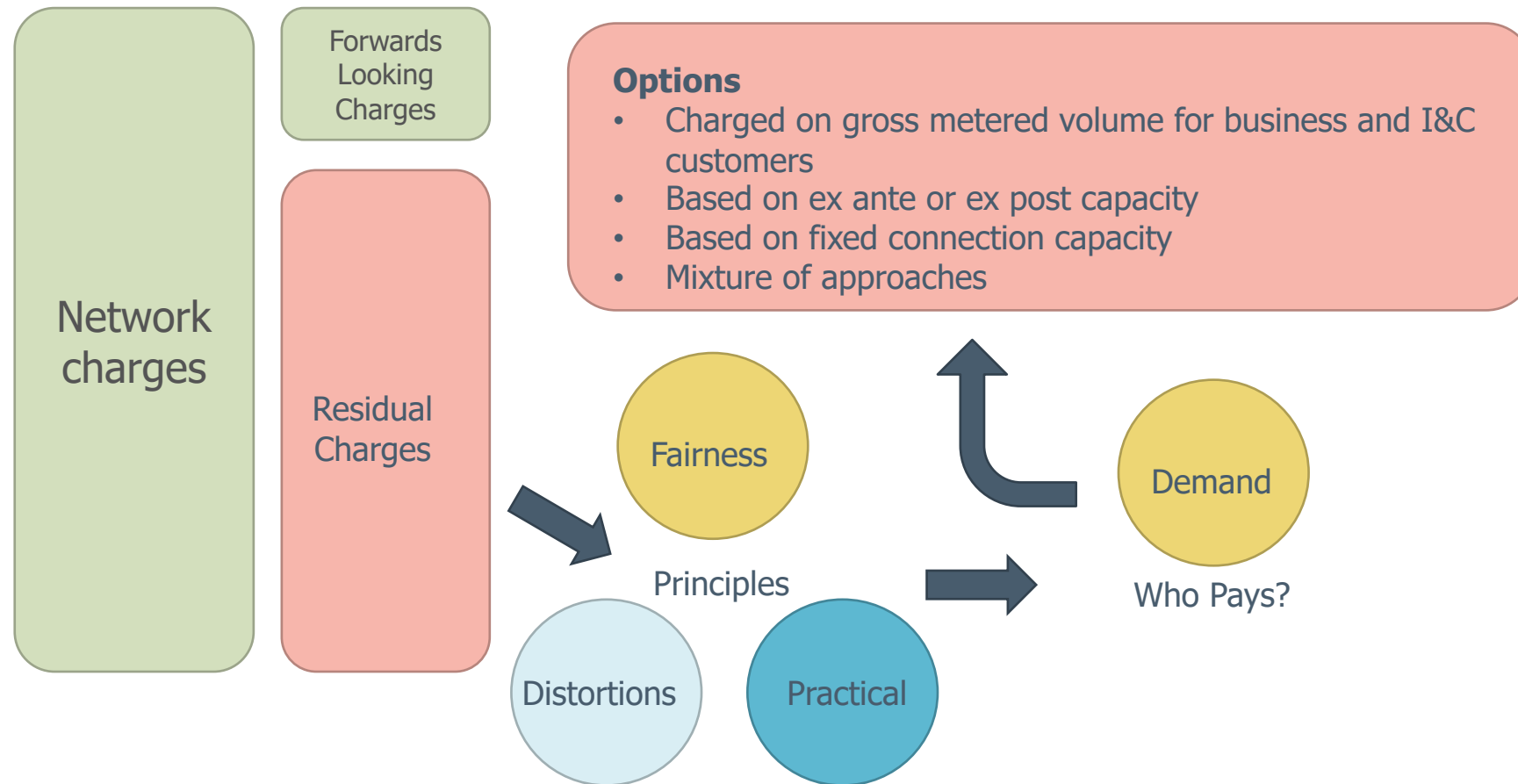
**Electrification**  
Transport and Heat

**Network Cost**  
Avoiding network  
reinforcement

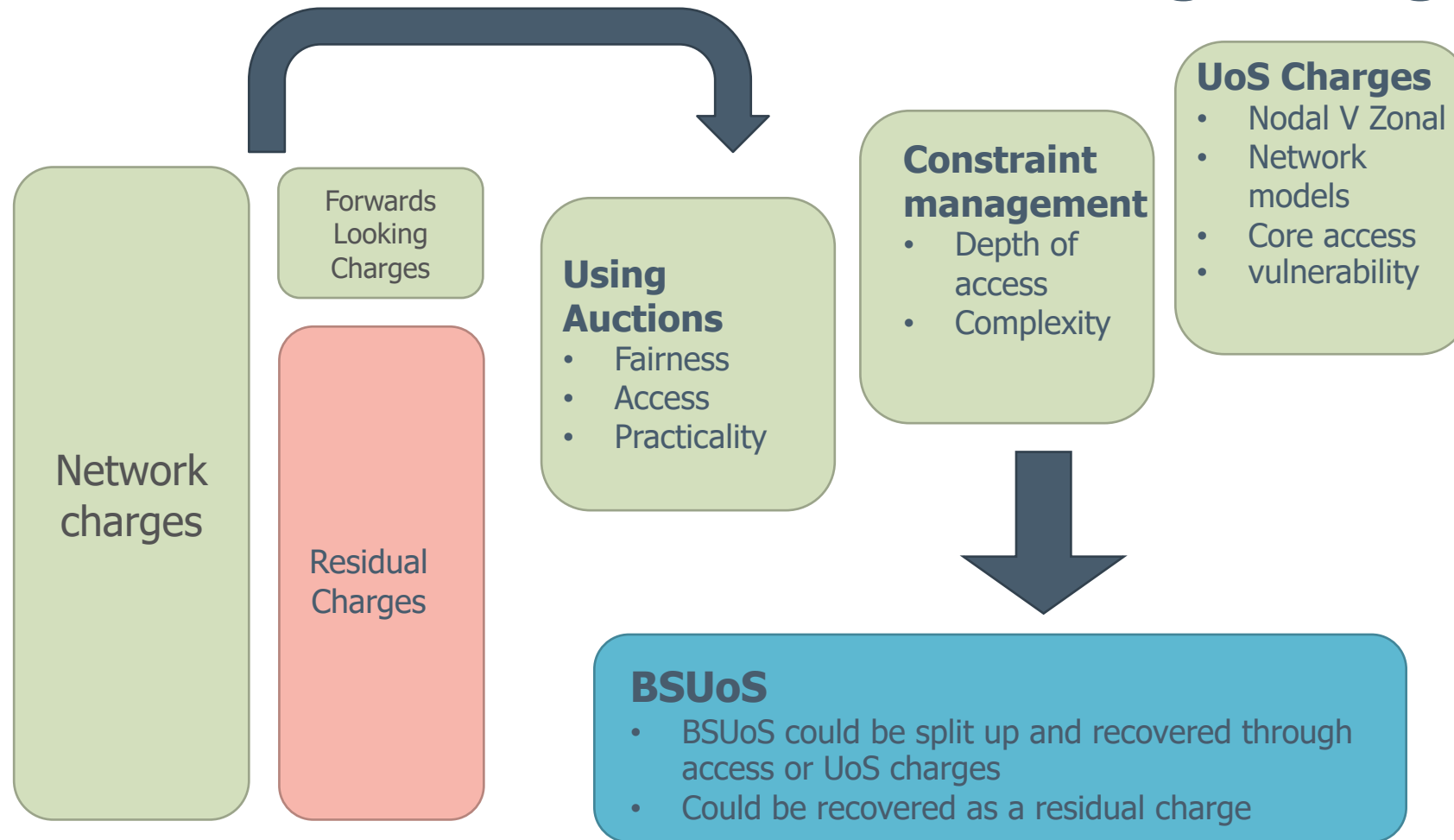
**Renewables**  
Meeting targets and getting  
access

**Technology**  
Microgrid, peer to peer

# Targeted Charging Review



# Network Access & Forwards Looking Charges



# Practical examples of impact

## Targeted Charging Review

### End User / DSR

Behind the meter / Private Wire generation or storage to avoid network costs

### Embedded Generator

Removal of residual element to import and export elements of time of use charges

## Forward Looking Charges and Network Access

### End User / DSR

Electric Vehicle and Charging

Limited by access rights

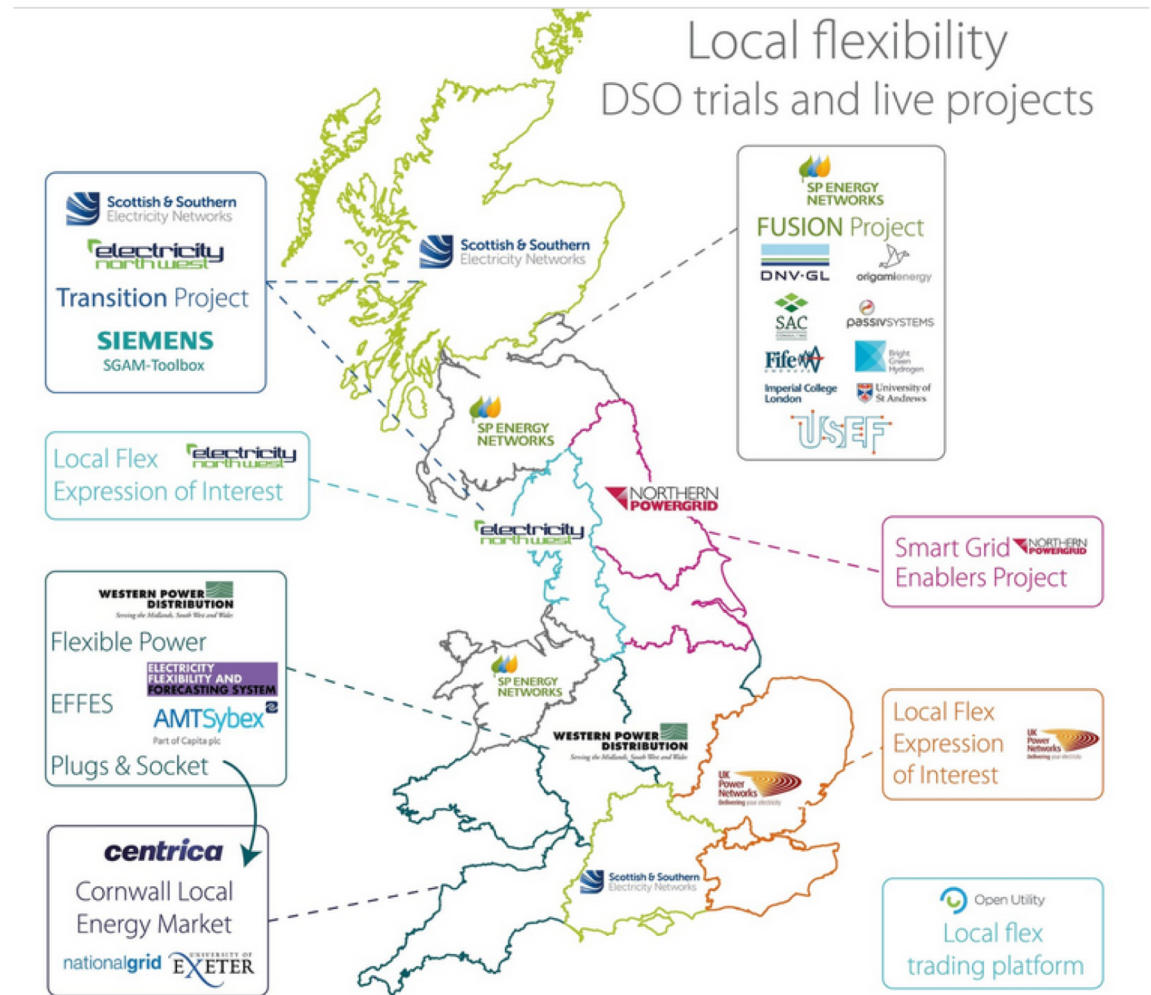
### Embedded Generator

Shallow Connection Charges

Higher charges in generation dominated areas

# Some light...

- Opportunities to extract value for end users and embedded generators from Distribution System Operator (DSO)
- Early stage of taking to market, but will coincide with changes to offer opportunities to avoid network reinforcement and manage outage planning





Tom Palmer – Principal Consultant

01603 604429

[t.palmer@Cornwall-insight.com](mailto:t.palmer@Cornwall-insight.com)